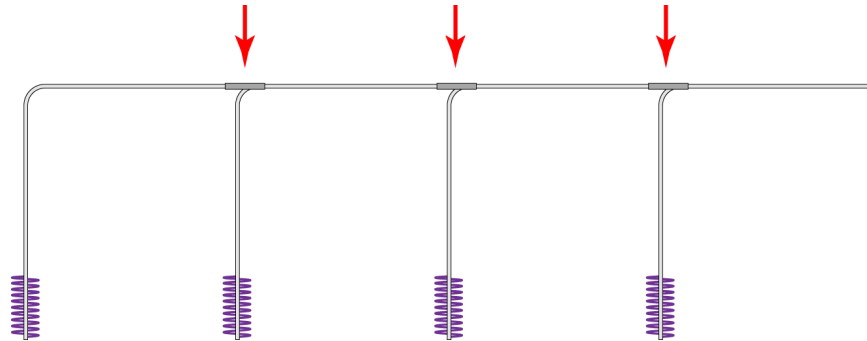
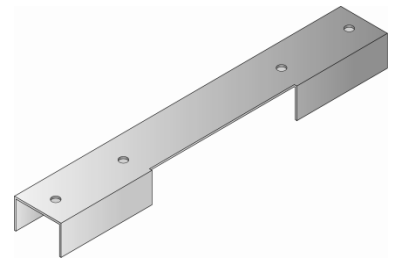




# CUBICLE TRACKING ASSEMBLY INSTRUCTIONS

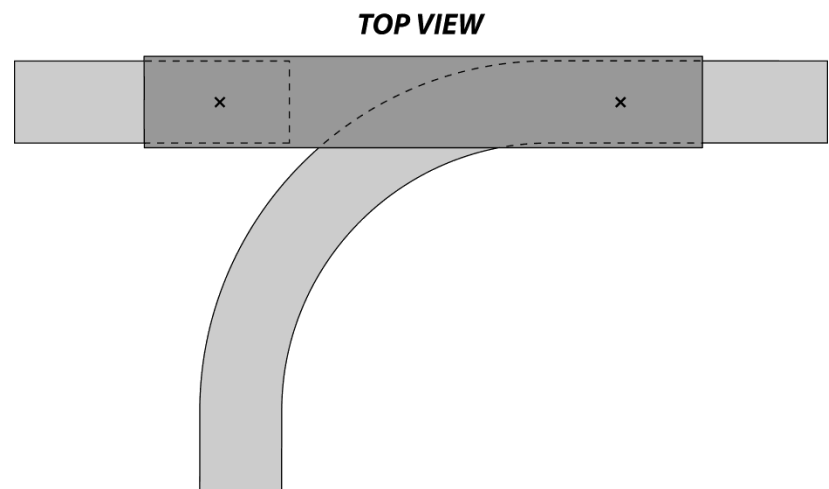
## 5000 SERIES CUBICLE TRACK – SUSPENSION MOUNT RADIUS CONNECTOR

A radius connector (part #5000-17) is used to attach the end of a suspension mounted track to the bend (radius) of another track. By tying the track configurations together, this bracket greatly enhances the integrity of a suspension mounted cubicle tracking system and is virtually required when many configurations are ganged together, as illustrated below.



### Instructions:

1. Once the first suspended track system is in place, layout of the second track begins. At this time, connect the tracks using the radius connector. Slide the radius connector over the end of the first track and over the bend (radius) of the second track. Note the positioning of the tracks in radius connector. Typically End Stops cannot be used with a radius connector. When this is the case, use a self-tapping metal screw inserted  $\frac{1}{2}$ " from the end of the first track as the carrier stop. Leave this screw just flush with the bottom of the track to allow it to effectively stop the carriers.



2. Upon final positioning of the second track system, secure the radius connector into place by running two screws up from the bottom of the track, through the top of the radius connector.

