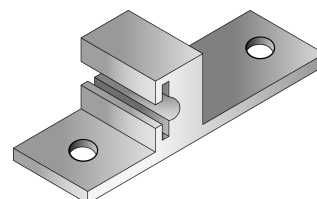




CUBICLE TRACKING ASSEMBLY INSTRUCTIONS

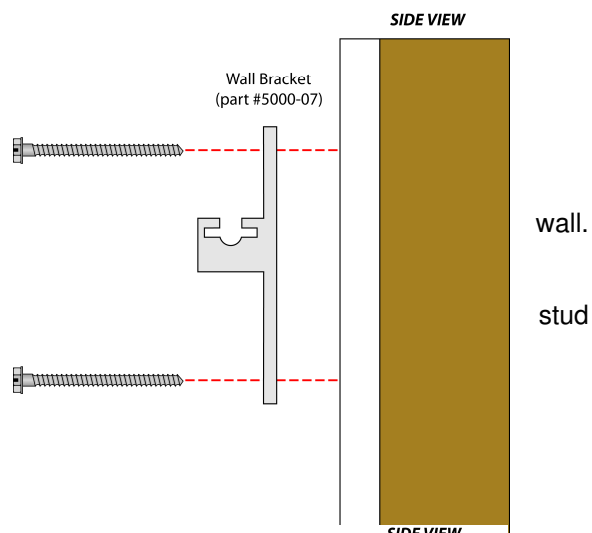
5000 SERIES CUBICLE TRACK – TRACK END WALL BRACKET

A Track End Wall Bracket (part #5000-07) is used to attach the ends of suspension mounted tracks to the wall and acts as a closed end stop. This mounting greatly enhances the integrity of a suspension mounted cubicle tracking system.

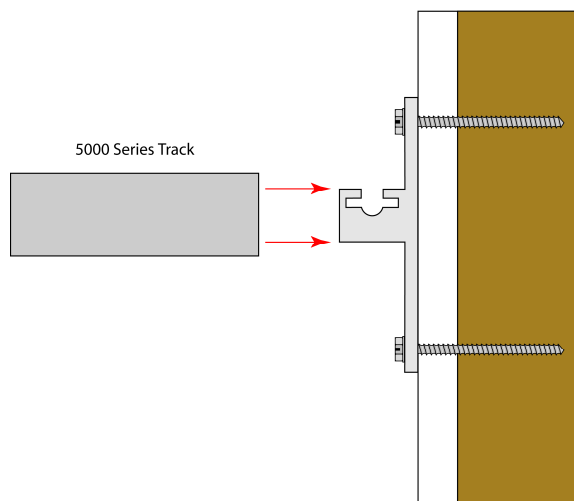


Instructions:

3. Once the suspended track system is in place, locate the track ends and mark their position on the wall. Loosen the track and swing it out of the way. Measure and attach the Wall Bracket to the wall using the appropriate mounting method (drywall & method illustrated here).



4. Slide the end of the track over the Wall Bracket.



5. Secure track to the Wall Bracket using a self-tapping screw. Run the screw through the side of the track and through the slot in the Wall Bracket.

