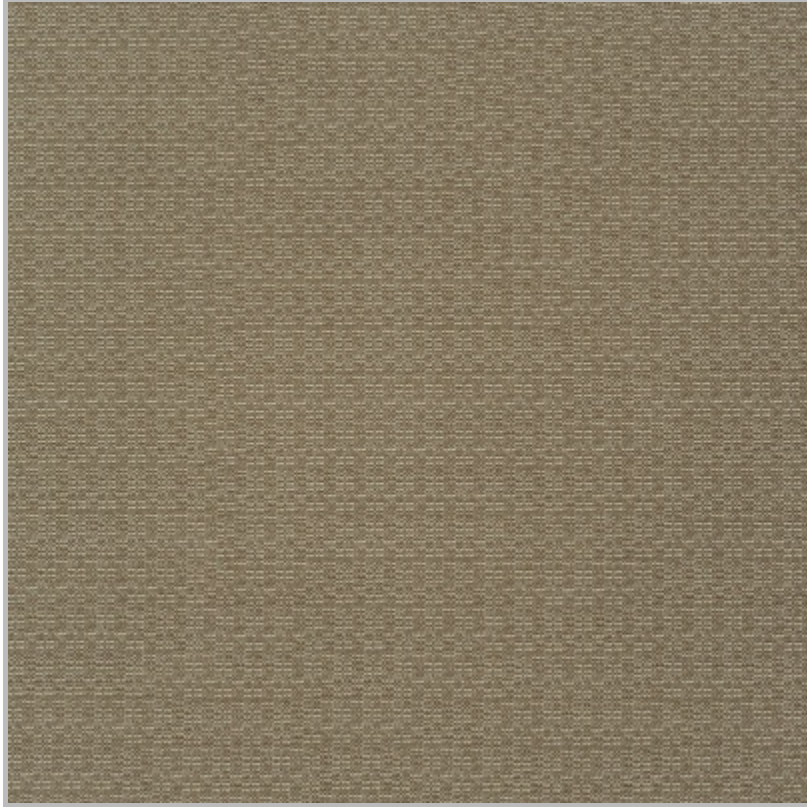


Tuxtila

Coffee



| | |
|---------------------------|---|
| Applications: | Bed Scarves, Bed Skirts, Bed Throws, Cornice Boxes, Draperies, Duverlets, Duvets, Pillows, Quilted Coverlet, Roman Shades, Top Sheets, Valances |
| Bolt Width: | 114", 57" |
| Vertical Repeat: | 0.625" |
| Horizontal Repeat: | 1.000" |
| Shown Railroaded: | No |
| Collection: | Trilogy |
| Specifications: | 100% Polyester, Flame Resistant, Meets NFPA 701 Small Scale |
| Reversible: | Not Recommended |



F A B T E X™