

RS Shade Oyster

Application

Roller Shades

Pattern & Textures

Solid, Textured

Fire Classification

NFPA 701

Maximum Width

126"

Openness

1%, 3%, 5% & 10%

Fabric Care

Dry or Spot Clean
Only

Material

25% Polyester
75% Vinyl on
Polyester

Custom Print

Available?

No

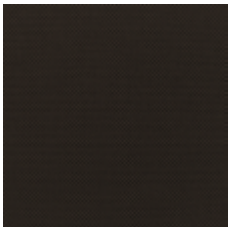
Minimum Order

No Minimums

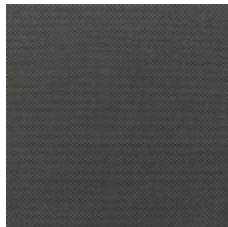
Fabric Type

Sheer

See the Collection



Charcoal Chestnut



Charcoal Gray



Charcoal



Oyster Beige



Oyster Pearl Gray