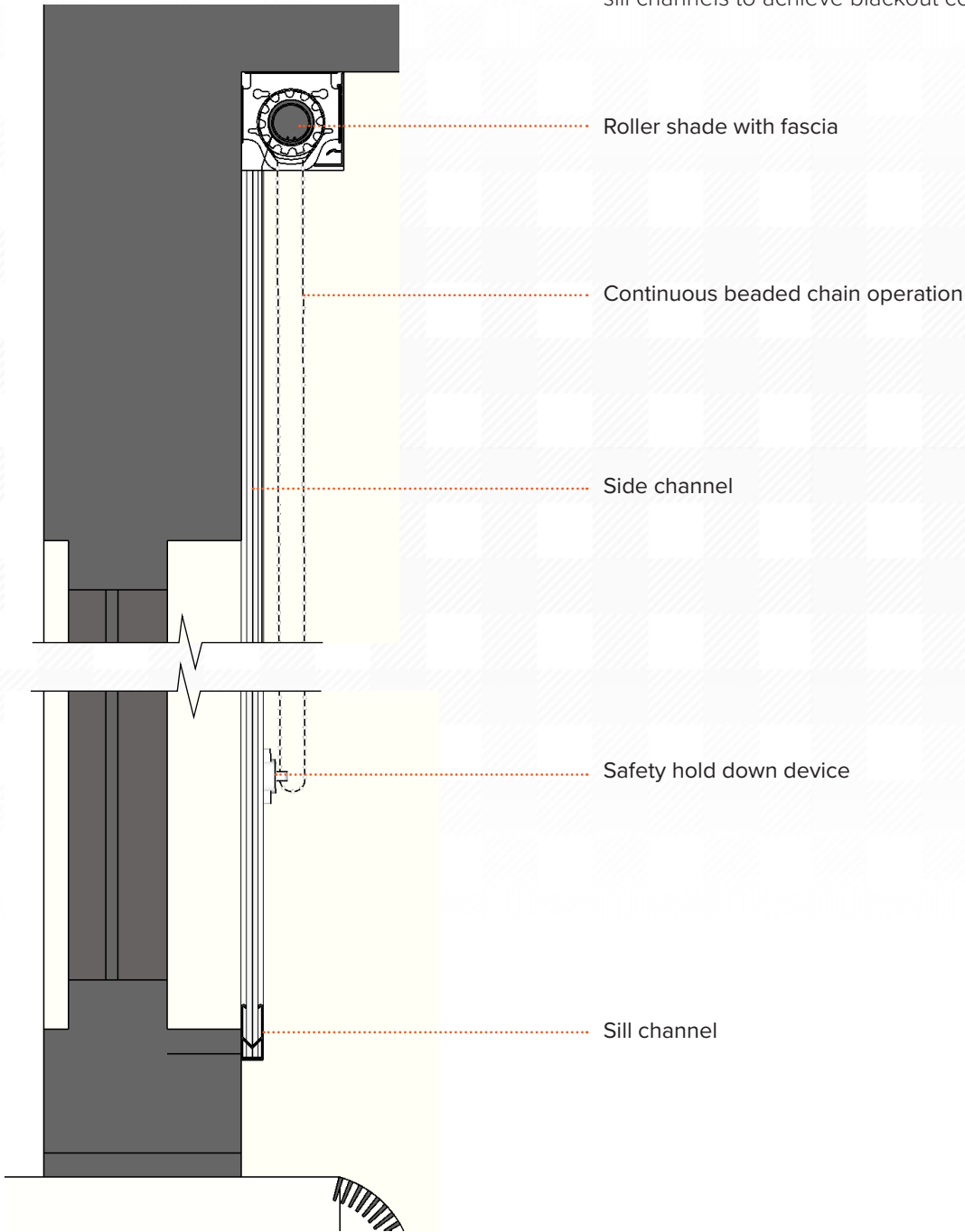


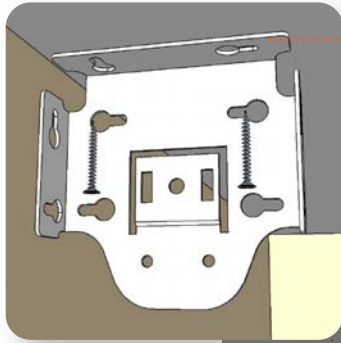
ROLLER SHADES

# Outside Mount Track

An Outside Mount roller shade is mounted on the wall over a window or at the ceiling. It's usually larger than the actual window opening so the window can be completely covered when the shade is drawn all the way down. Another option would be to use side and sill channels to achieve blackout conditions.



## WINDOW SECTIONAL VIEW

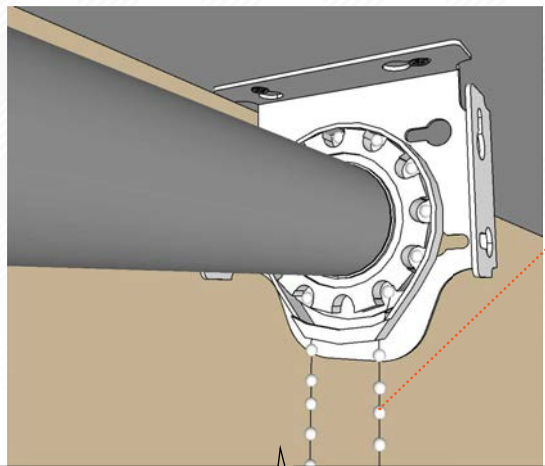
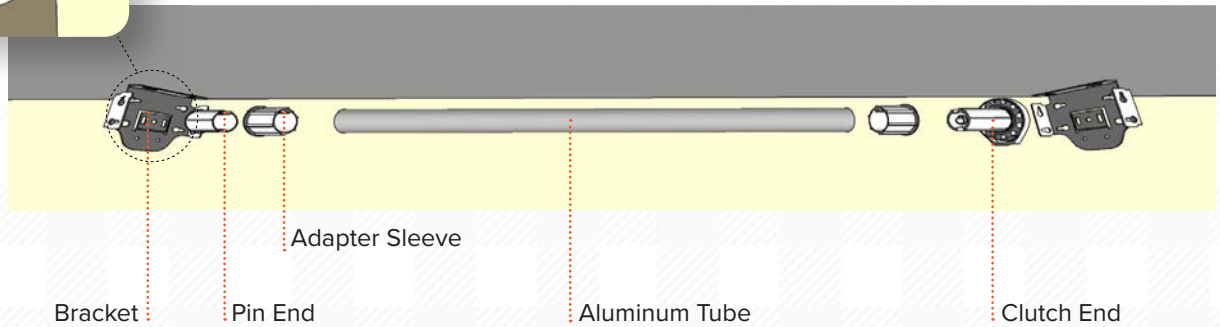


### Brackets

Brackets are installed on the wall or the ceiling, on both ends. Screws are not provided.

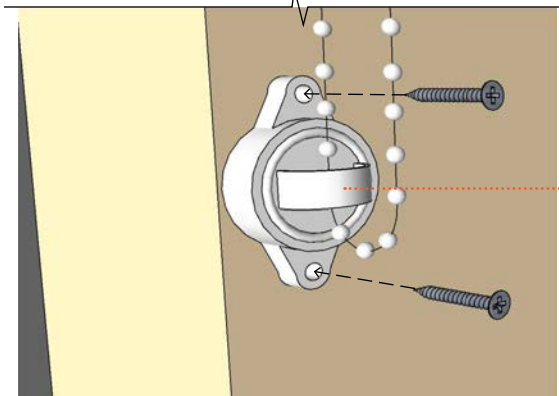
### Clutch, Tube & Pin End

The clutch, tube & pin end are shipped pre-assembled with the fabric and is ready for installation.



### Chain & Hold Down Device

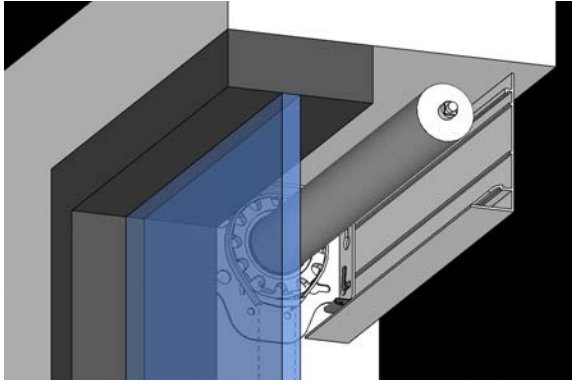
Beaded chain wraps around the clutch. Ball stops are installed on site to set the upper and lower limits.



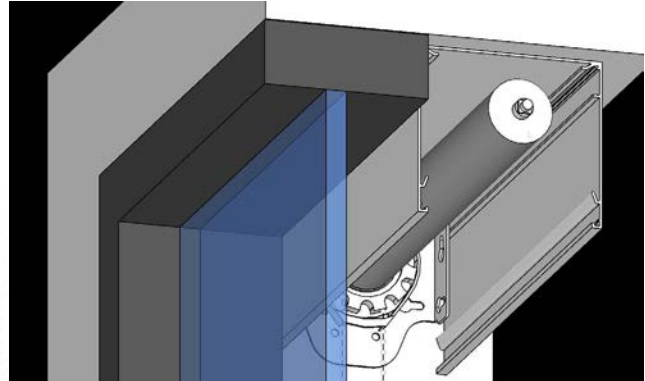
Safety hold down device is mounted on the wall with provided mounting screws.

## Fascia/Headbox

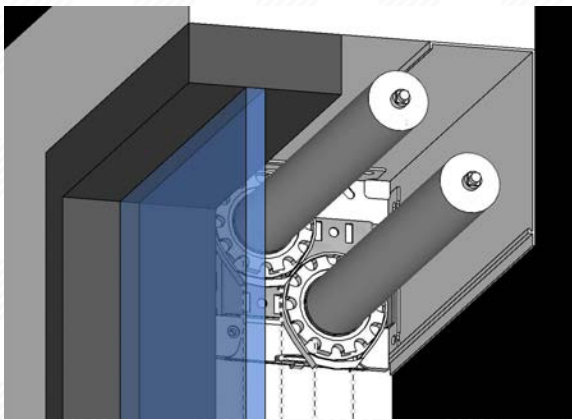
The fascia or headbox conceals the mechanism and comes in 4" or 5" options.



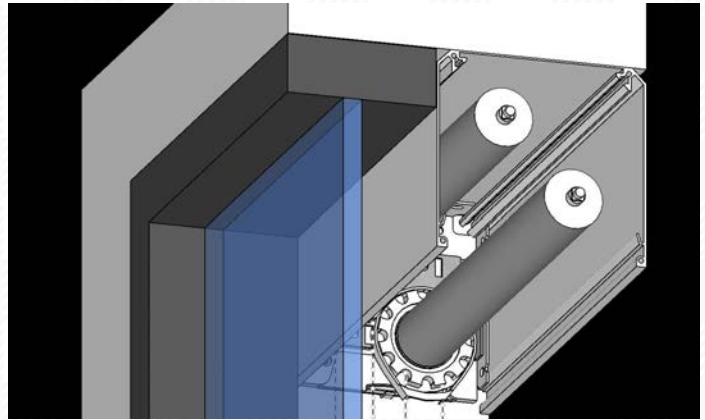
FASCIA - Single Shade



HEADBOX - Single Shade



FASCIA - Dual Shade



HEADBOX - Dual Shade

### COLOR OPTIONS:

#### 4" Single Shade

- White
- Clear Anodized
- Bronze
- Black
- Vanilla

#### 5" Single Shade

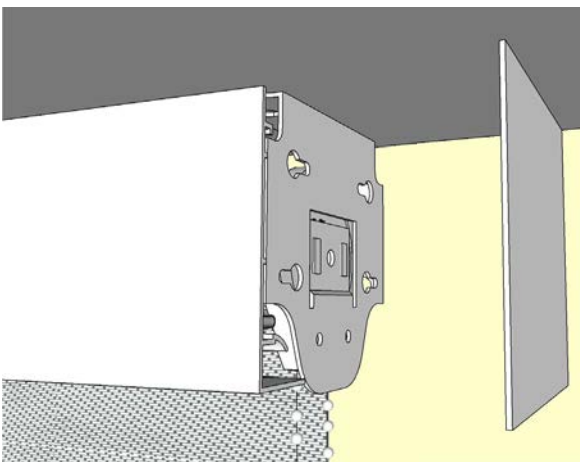
- White
- Clear Anodized
- Bronze
- Black

#### 4" & 5" Dual Shade

- White
- Clear Anodized

#### Side/Sill Channel

- White
- Clear Anodized
- Bronze



## End Plates

The end plates provide a cleaner finish on the sides.